

Ensuring effective management and governance in Sites of Ecological Importance and expanding biodiversity protection in Southern Lebanon



Funded by the
European Union

ضمان الإدارة والحوكمة الفعالة في المواقع ذات الأهمية البيئية وتوسيع
حماية التنوع البيولوجي في جنوب لبنان



Funded by the
European Union



Implemented by



Outlines

1. Introduction on SPNL

BioConnect project

2. Geographical scope

3. Main aim

4. Achievements



1

Introduction on SPNL



SPNL
homat al hima

WHO WE ARE

ESSENTIAL FACTS

- First environmental NGO in Lebanon
- Established in 1986
- ...A national, non-geographic, non-sectorial, non-political environmental NGO
- BirdLife partner in Lebanon
- First IUCN member in Lebanon
- World leader in Hima revival to conserve the IBA's and KBA's

Our mission

SPNL AIMS TO PROTECT NATURE, BIRDS AND BIODIVERSITY OF LEBANON TO ENSURE SUSTAINABLE USE OF NATURAL RESOURCES THROUGH THE HIMA APPROACH.



OUR DIFFERENT PROGRAMS

Saveguarding nature



Important Bird
and Biodiversity
Areas



Responsible
Farming



Education
SNOW



Migratory
Soaring Birds



Eco-Tourism



Responsible
hunting



Hima
Revival



Globally
Threatened
Species



Homat el
Hima

From IBBA to HIMA

Hima means "protected area" in Arabic

01 →

NATURE RESERVES

From the 15 identified sites, Five are Nature Reserves.

02 →

NO STATUS OF PROTECTION

The other 10 don't have any protection status and lie on public lands.

03 →

EFFECTIVE MANAGEMENT

This lead to a quick solution to ensure their effective management

04

HIMA

Traditional community-based approach to:

- * sustainably manage natural resources .
- * realize common benefits for people and nature
- * conserve biodiversity and heritage.

The HIMA was established over 1500 years ago within the Arabian Peninsula. It evolved later by adding to its social norms and values especially through the Islamic culture.

SPNL and the Hima revival

Since 2004, with the support
Birdlife International & IUCN



The Hybrid HIMA

SPNL merged modern science with the values of the traditional Hima.



Using scientific assessments for the identification of sites



Adopting social tools for stakeholder analysis assessments.



Adopting participatory approaches to ensure ownership by the community.



Stressing the values & culture embedded in the traditional Hima (equity, traditional knowledge, underprivileged groups, benefits for the poor,...)



NATURE AND BIODIVERSITY VALUES

Important natural resource

Possess globally endangered / endemic species



OWNERSHIP

Publicly owned to serve the good of the community



SOCIO-ECONOMIC & CULTURAL VALUES

Contributes to the livelihoods of the community

Empowers minorities

Ensures social coherence

Empowers traditional and cultural practices

HOW TO SELECT A HIMA : CRITERIAS

2

Geographical Scope

1st February 2022 – 31st of October 2025

A 45-month Workplan

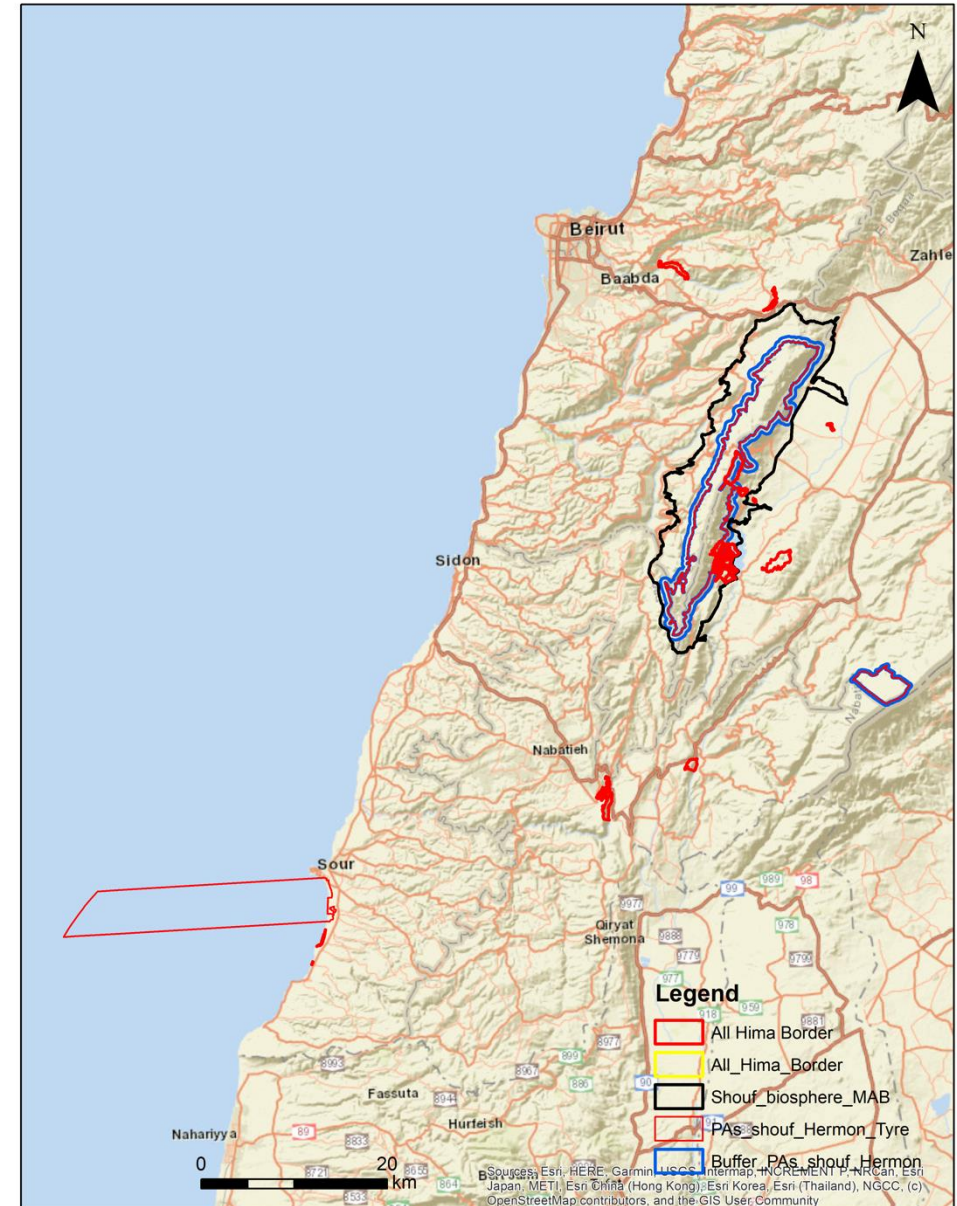
Partners in the project



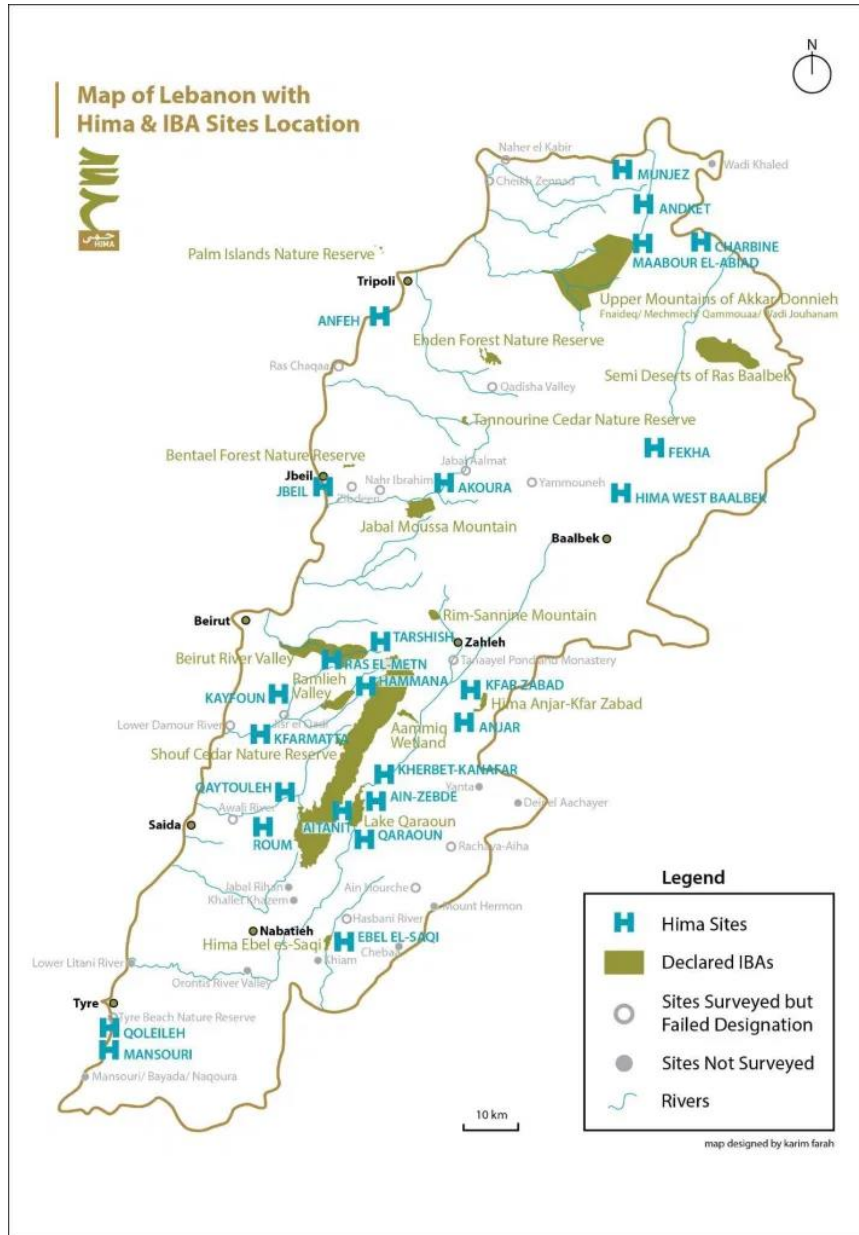
Funded by the
European Union



- جمعية أرز الشوف
- جمعية تنمية القدرات الريفية
- جمعية المجتمع والبيئة
- وجمعية حماية الطبيعة في لبنان



Geographical scope of the project

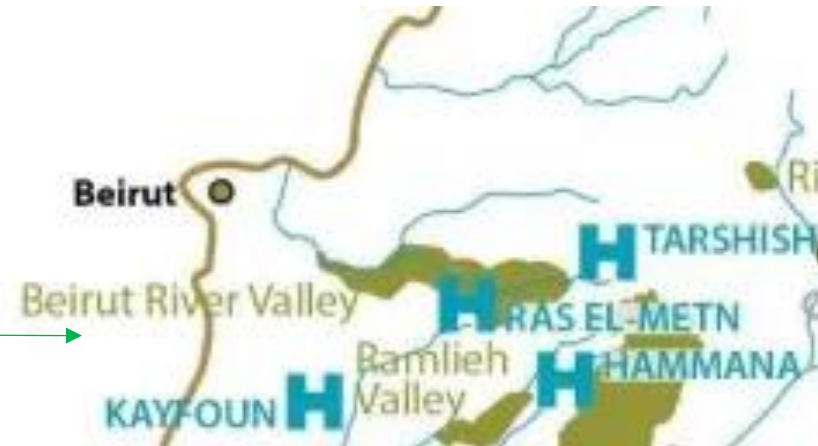
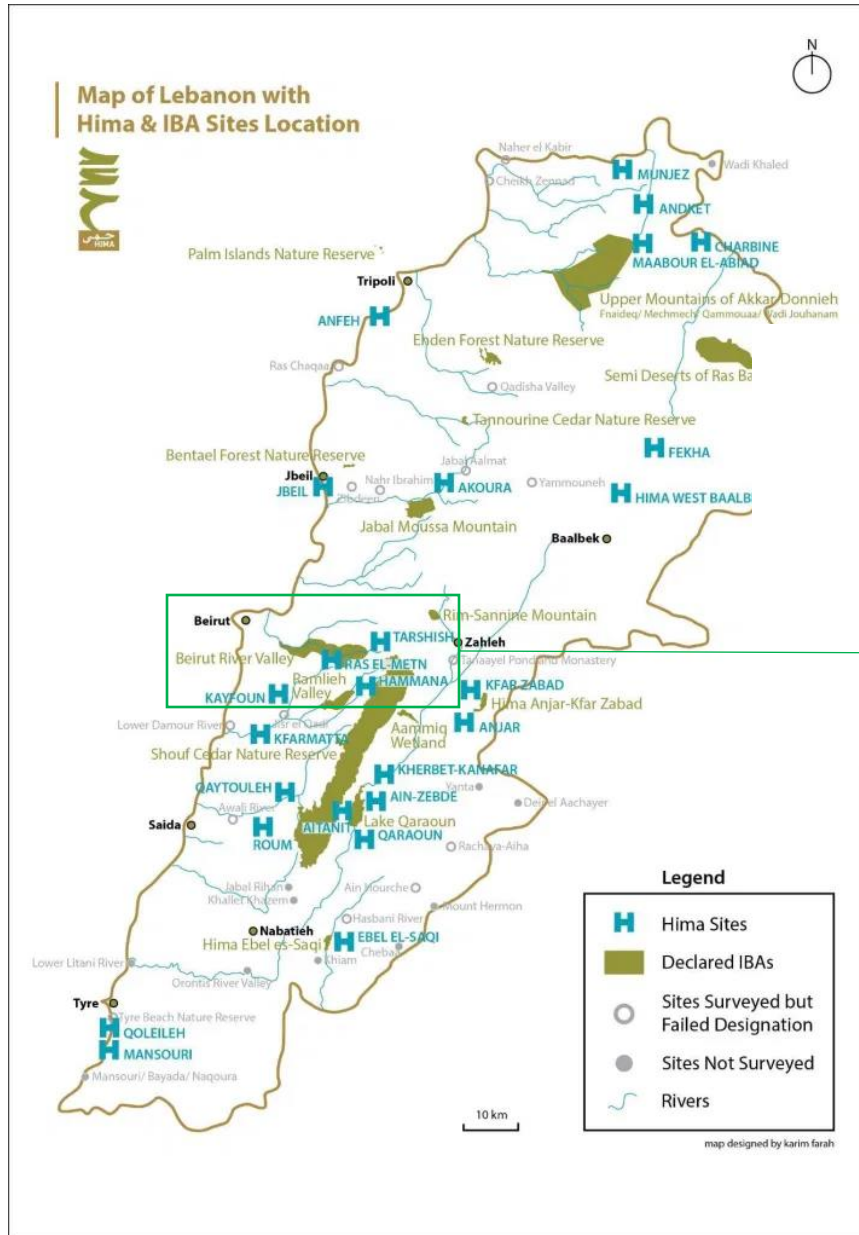


4 Regions

7 Himas

Geographical scope of the project

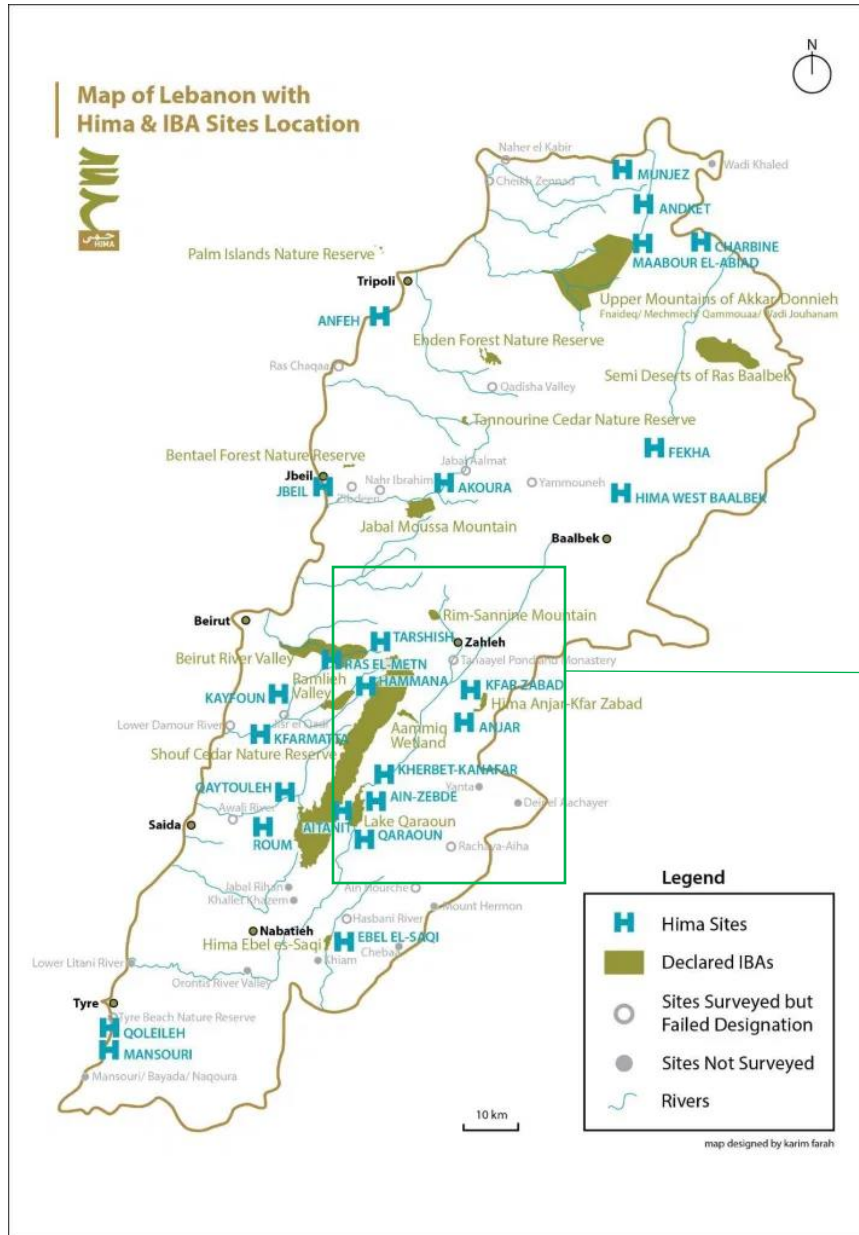
Upper Beirut River Valley



Hammana

Ras El Metn

Geographical scope of the project



West Bekaa

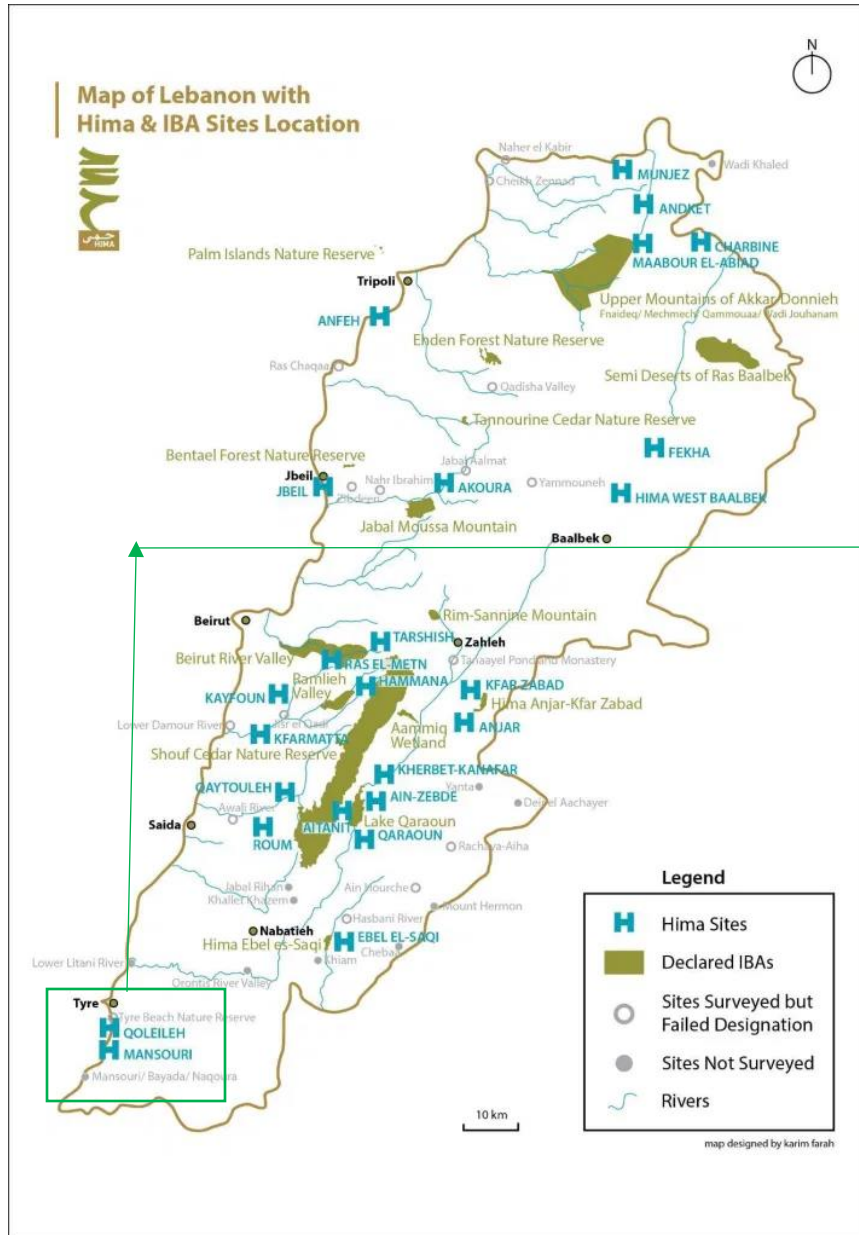


Kherbet Qanafar

Ain Zebde

Geographical scope of the project

Coastal area of South Lebanon

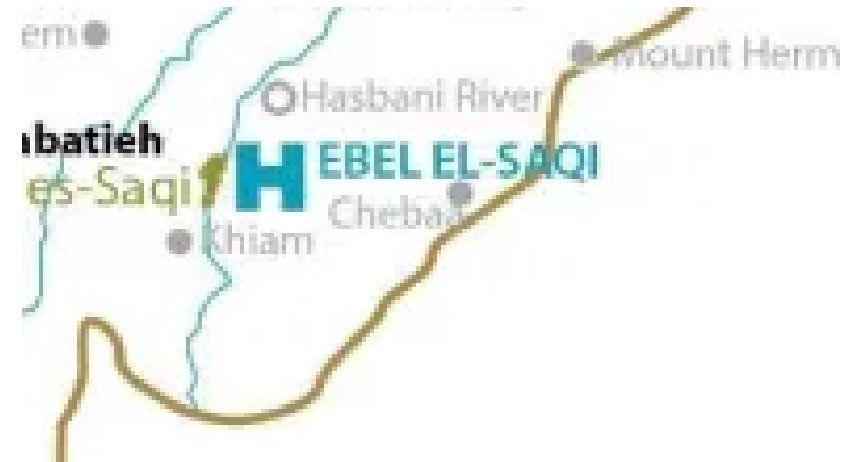
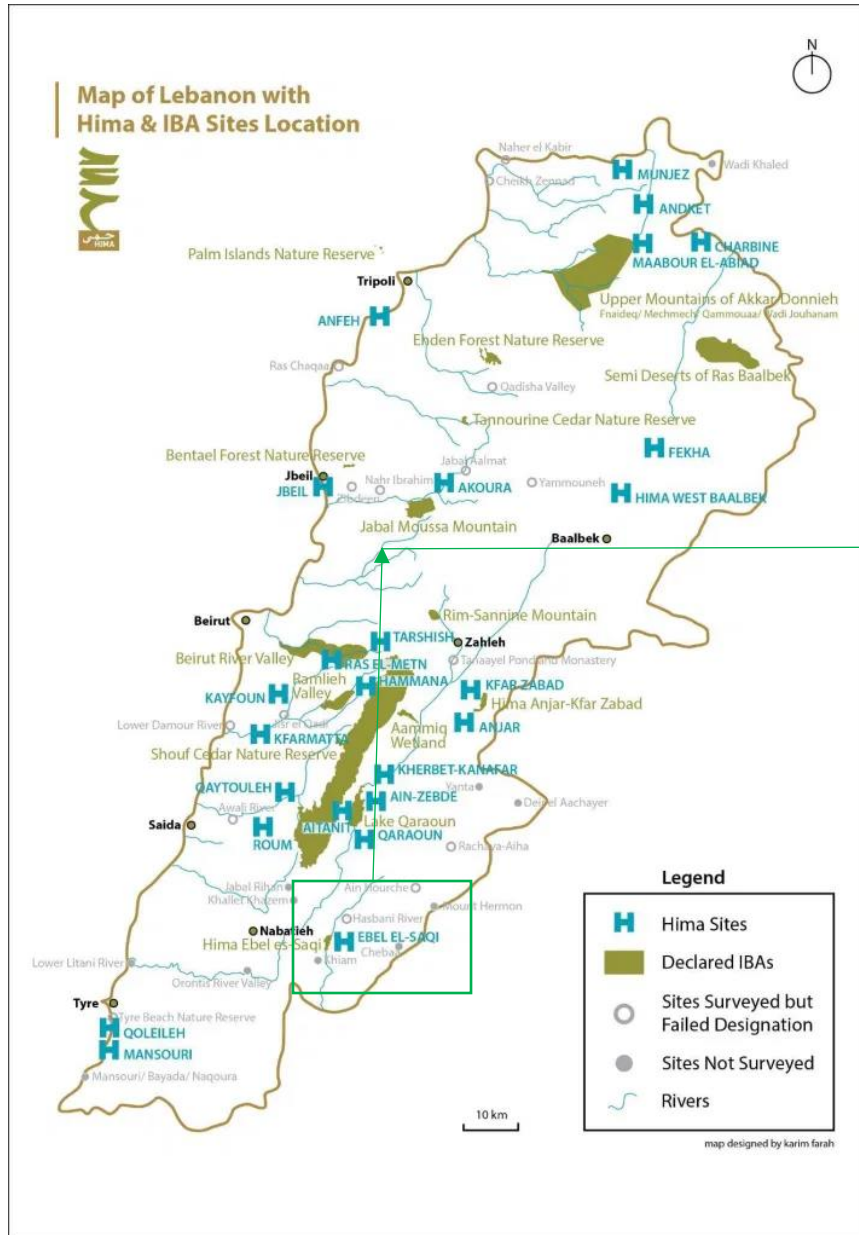


Qoleileh

Mansouri

Geographical scope of the project

Hima Ebel El Saqi



Ebel El Saqi

3

Main Aim

Project Aim

Biodiversity | Traditional Practices | PA management

The project aims at 1) Enhancing the management and governance of sites of ecological importance in southern Lebanon; and 2) Creation of new Protected Areas and OECMs for broader landscape conservation in southern Lebanon.

يهدف المشروع إلى (1) تعزيز إدارة وحوكمة المواقع ذات الأهمية البيئية في جنوب لبنان؛ و (2) إنشاء مناطق محمية جديدة ومراكز حماية طبيعية للحفاظ على المناظر الطبيعية على نطاق أوسع في جنوب لبنان.



4

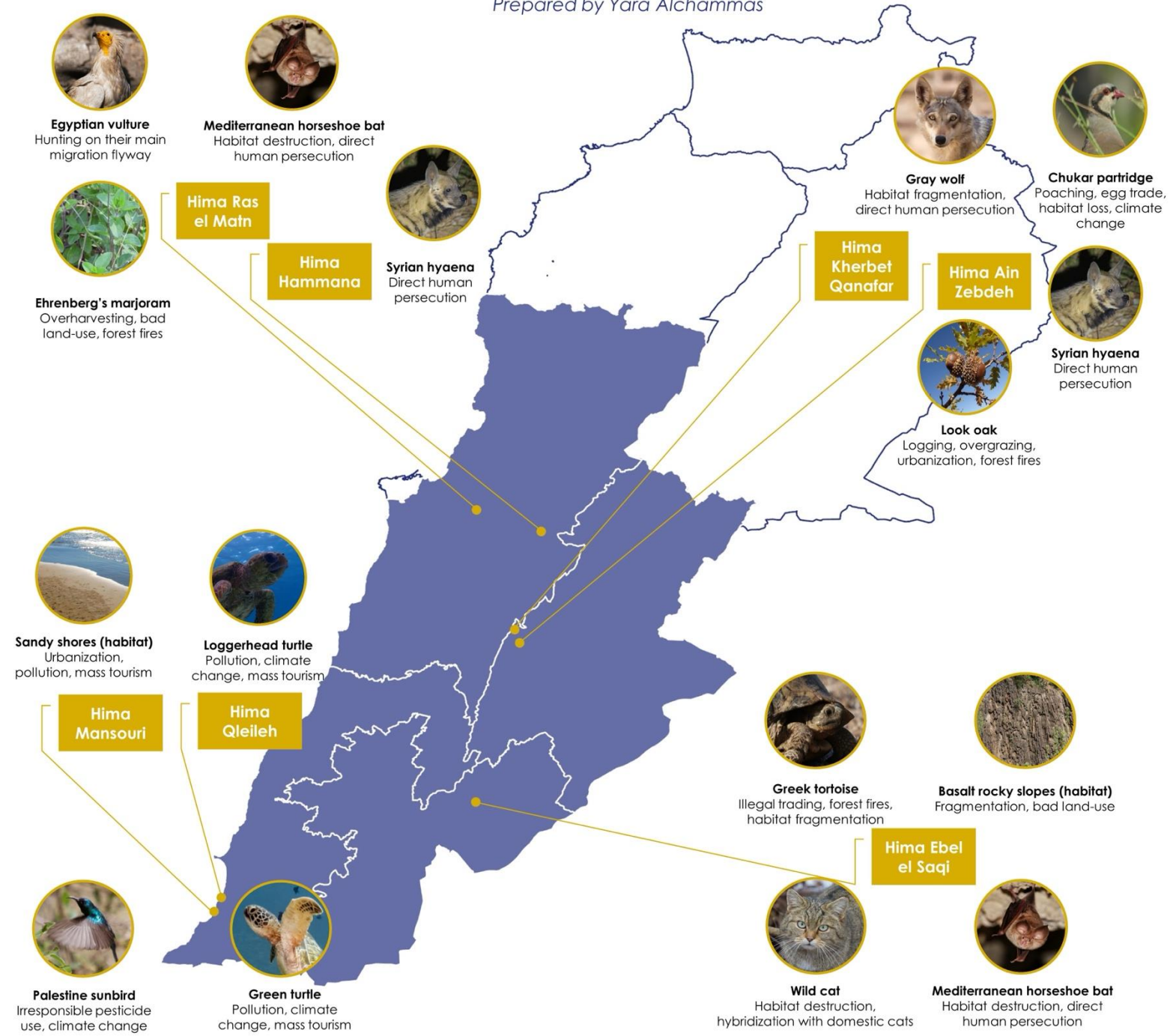
Achievements

Identification of Key Biodiversity Features

- Baseline biodiversity assessments finished in March 2023
- KBFs has been selected (4 per Hima site).



Region 1: Hammana/ Ras El Maten	KBF1.1 - Mediterranean horseshoe bat (Rhinolophus euryale)	Hima Ras El Maten / Al Heskan Cave
	KBF 1.2 - Egyptian Vulture (Neophron percnopterus)	Hima Hammana / Hima Ras El Maten (Migration Route)
	KBF 1.3 - Ehrenberg's Marjoram (Origanum ehrenbergii)	Within the forest of Hima Ras El Maten and in the surrounding pine forests
	KBF 1.4 - Stripped Hyaena (Hyaena hyaena syriaca)	Ras El Maten & Hammana
Region 2: Hima Kherbet Qanafar & Hima Ain Zebdeh	KBF 2.1 - Chukar Partridge (Alectoris chukar)	Kherbet Qanafar
	KBF 2.2 - Look Oak (Quercus look)	All the forst of Ain Zebdeh/Kherbet Qanafar
	KBF 2.3 - Grey Wolf (Canis lupus)	All the forst of Ain Zebdeh/Kherbet Qanafar
	KBF 2.4 - Stripped Hyaena (Hyaena hyaena syriaca)	Hima forest of Kherbet Qanafar and Ain Zebdeh
Region 3: Hima Qleileh & Hima Mansouri	KBF 3.1 - Palestinian Sunbird (Cinnyris osea)	Hima Qleileh and Mansouri
	KBF 3.2 - Sandy shore (Coastal Habitat)	Hima Mansouri
	KBF 3.3 - Loggerhead turtle (Caretta caretta)	Hima Mansouri
	KBF 3.4 - Green Turtle (Chelonia mydas)	Hima Mansouri
Region 4: Hima Ebel El Saqi	KBF 4.1 - Wild Cat (Felis silvestris tristrami)	Forest of Hima Ebel El Saqi
	KBF 4.2 - Mediterranean horseshoe bat (Rhinolophus euryale)	One Cave within Ebel El Saqi
	KBF 4.3 - Basalt Rocky slopes	Within the Hima area in Ebel El Saqi
	KBF 4.4 - Greek Torotise	Within the Hima area in Ebel El Saqi



Citizen Science



Citizen science manual developed – first of its kind in Lebanon.



Technical guide for Hima Hammana and Hima Ras el Matn, accompanied by an informational pamphlet and a booklet for all the species in Lebanon were fully developed.



The “Homat Al Hima – Quick Track” application is finalized and ready to be used: a biodiversity monitoring online application for the development of an online database (used by experts, citizens, nature lovers...)

Lebanese cedar

Cedrus libani

الارز اللبناني

The Lebanese cedar is an evergreen pine tree found at altitudes between 500 and 3000 meters. At maturity, it can reach heights between 12 and 18 meters, and a width of 9 to 15 meters.

The leaves of this conifer are arranged in needles, and its fruits appear in the spring time as brown cones.

The Lebanese cedar is Vulnerable.



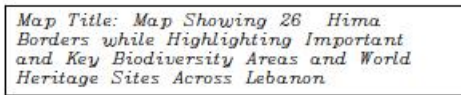
Photo credits: Husein Ali Zorkot

TECHNICAL GUIDE TO CITIZEN SCIENCE BIODIVERSITY MONITORING IN LEBANON

Prepared by Yara Alchammas,
Biodiversity Data Analyst, SPNL - May 2023, Beirut
Under a project entitled: “BioConnect” and Funded by the European Union

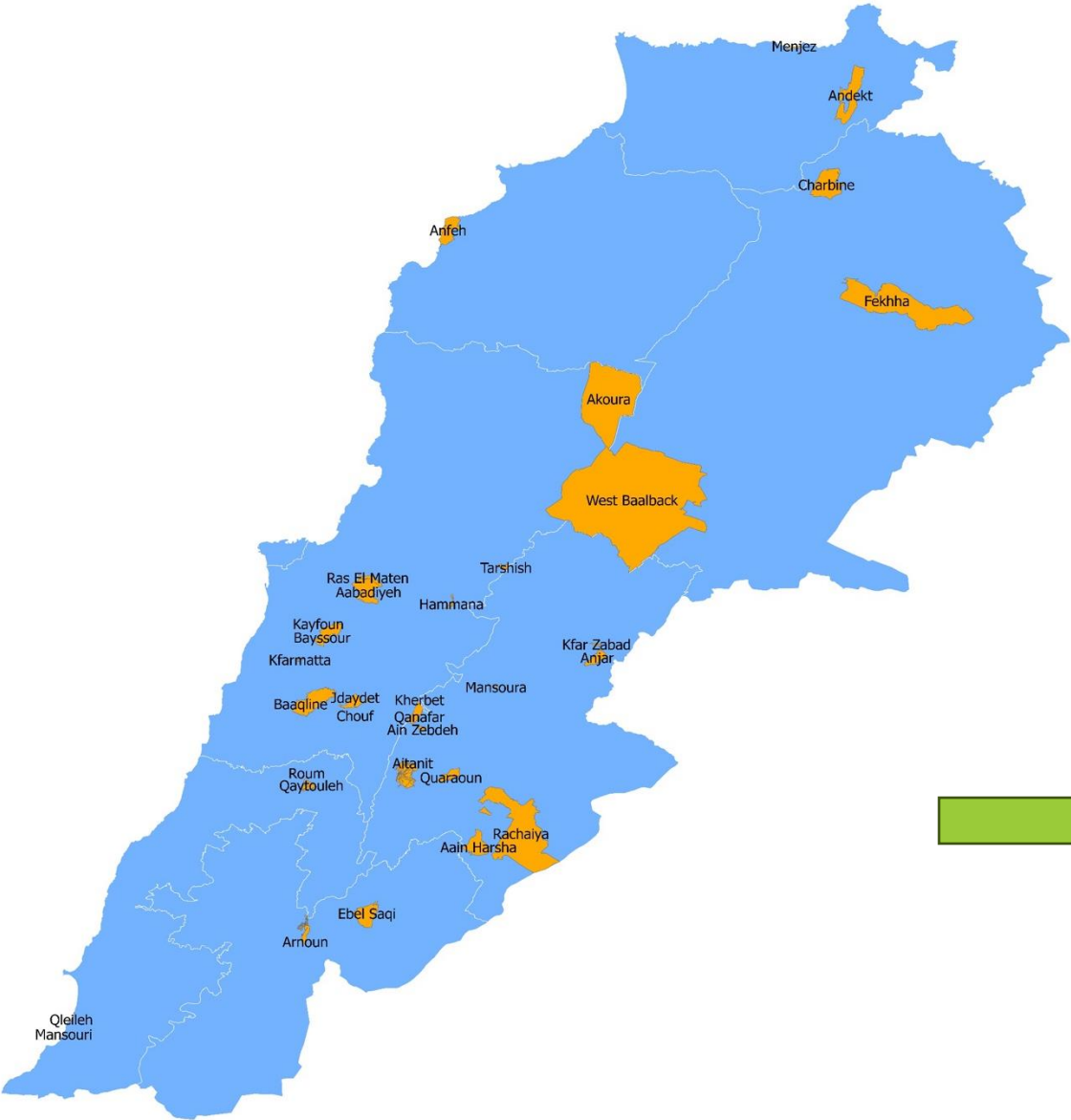


Funded by the
European Union



Name	AREA	Area_km
West Baalback	250424992	250.43
Hima Tarshish	658572	0.66
Hima Roum	880513	0.88
Hima Ras El Maten	1667880	1.67
Hima Quaraoun	3206120	3.21
Hima Qleileh	164576	0.16
Hima Qaytouleh	694725	0.69
Hima Menjez	447509	0.45
Hima Mansouri	11230.2002	0.01
Hima Mansoura	200695	0.2
Hima Kherbet Qanafar	3254910	3.25
Hima Kfarmatta	139201	0.14
Hima Kfar Zabad	348584	0.35
Hima Kayfoun	8778.320313	0.01
Hima Jdaydet Bekataa	34108	0.03
Hima Hammana	598900	0.6
Hima Ebel Saqi	7989880	7.99
Hima Charbine	13658200	13.66
Hima Arnoun	2440920	2.44
Hima Anjar	3210420	3.21
Hima Anfeh	7328290	7.33
Hima Andekt	14647500	14.65
Hima Fekhha	59091800	59.09
Hima Akoura	67456496	67.46
Hima Aitanit	8003390	8
Hima Ain Zebdeh	555135	0.56
	Sum	447.13
	Percentage	4.28

Map of the 33 Himas in Lebanon



Achieving around 22% of protected areas coverage



Outreach to Hima Local communities

Empower local communities in the management of Himas (Homat al Hima, Hima school)

Homat al Hima & Hima School (SNOW)

- Covered all regions of the project
- SNOW: Target exceeded 1214 students (1200)
- Homat al Hima: target exceeded :140 youth (90)



Conduct an annual workshop for Hima leaders to share experiences and understand their roles in relation to each other

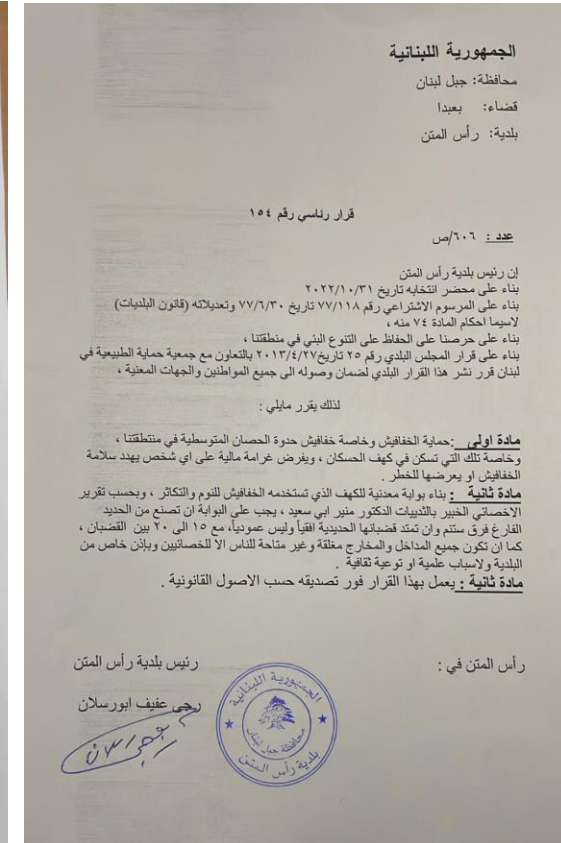
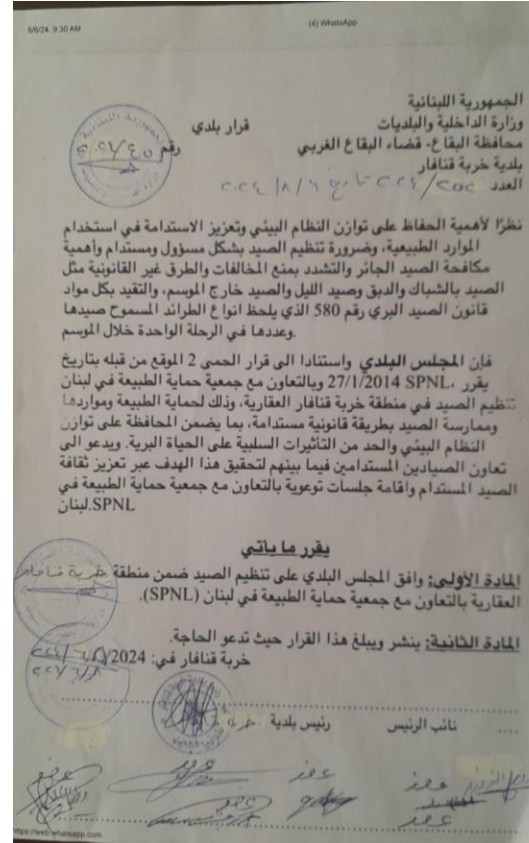
- The first annual Hima Leaders Forum conducted 23 November 2023 at HHIC Kherbet Qanafar
- 2nd Hima Leaders Forum was held on 24 January 2025 at Ras el Maten municipality.

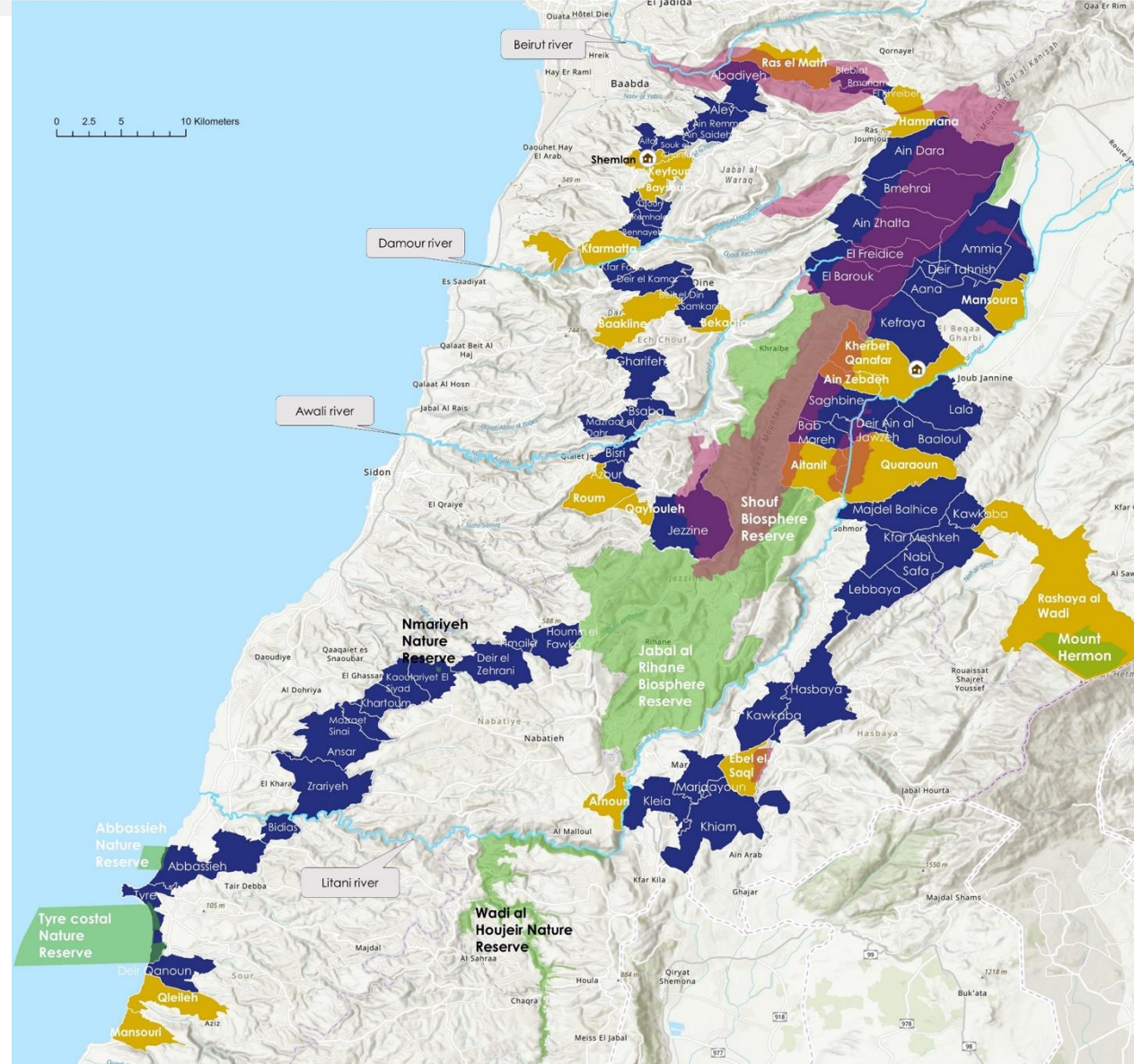


Advocate for local policies by municipalities to combat unsustainable/illegal practices in the selected Himas

- 3 Municipal decisions till now

- Ain Zebde
- Kherbet Qanafar
- Ras el Maten





Map key:

- Protected area
- Town with no established Hima
- Town with an established Hima
- Important bird area
- SPNL center
- River

Yara Alchammas

© Basemap powered by ESRI – © OCHA Services
 – © UNEP-WCMC and IUCN (2023), Protected Planet: The World Database on Protected Areas (WDPA) and World Database on Other Effective Area-based Conservation Measures (WD-OECM)



Your Logo or Name Here



Hima for Peace villages

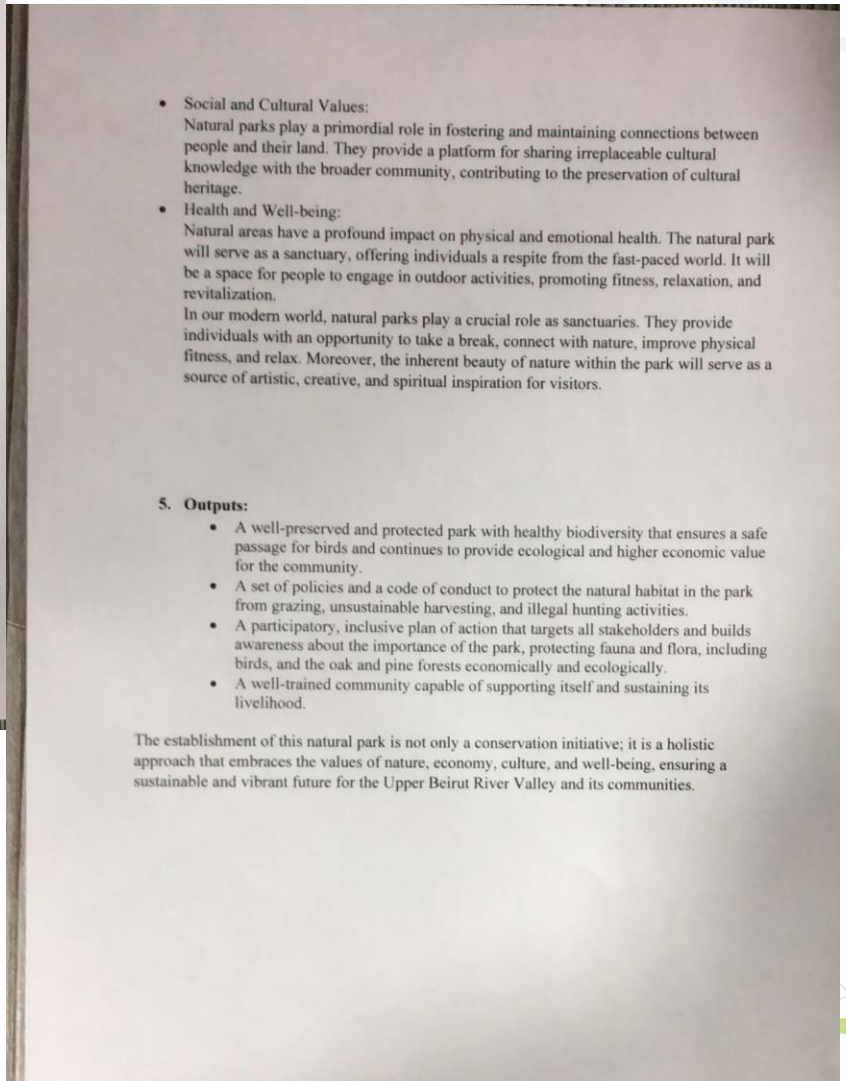
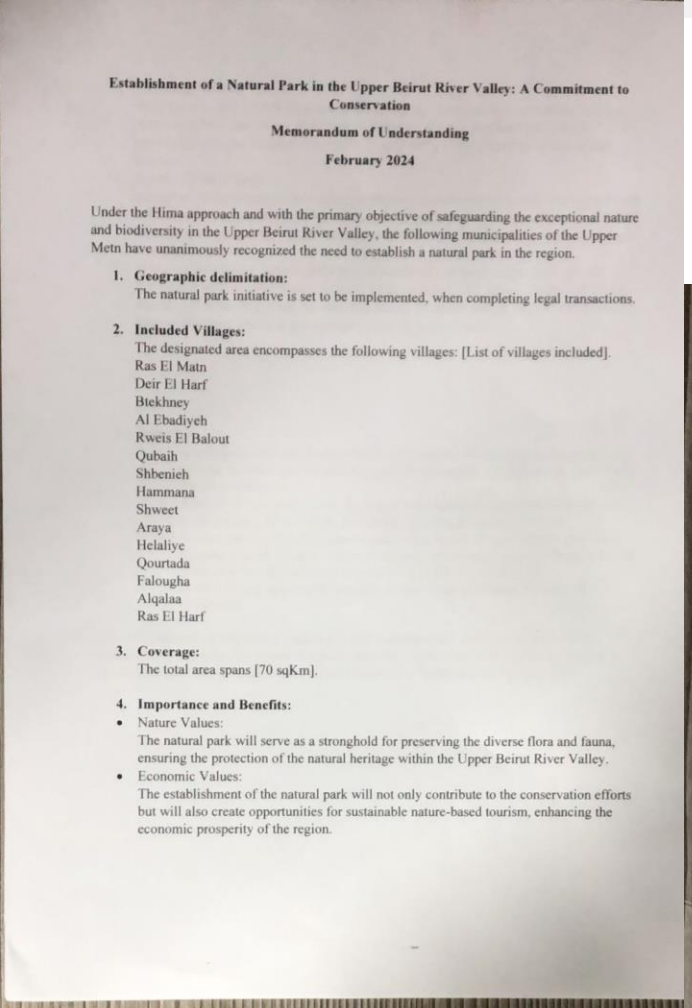
- Kayfoun
- Chemlan
- Baysour
- Souk el Gharib
- Kfarmatta
- Ein Remmeneh
- Ain Sayde
- Aitat



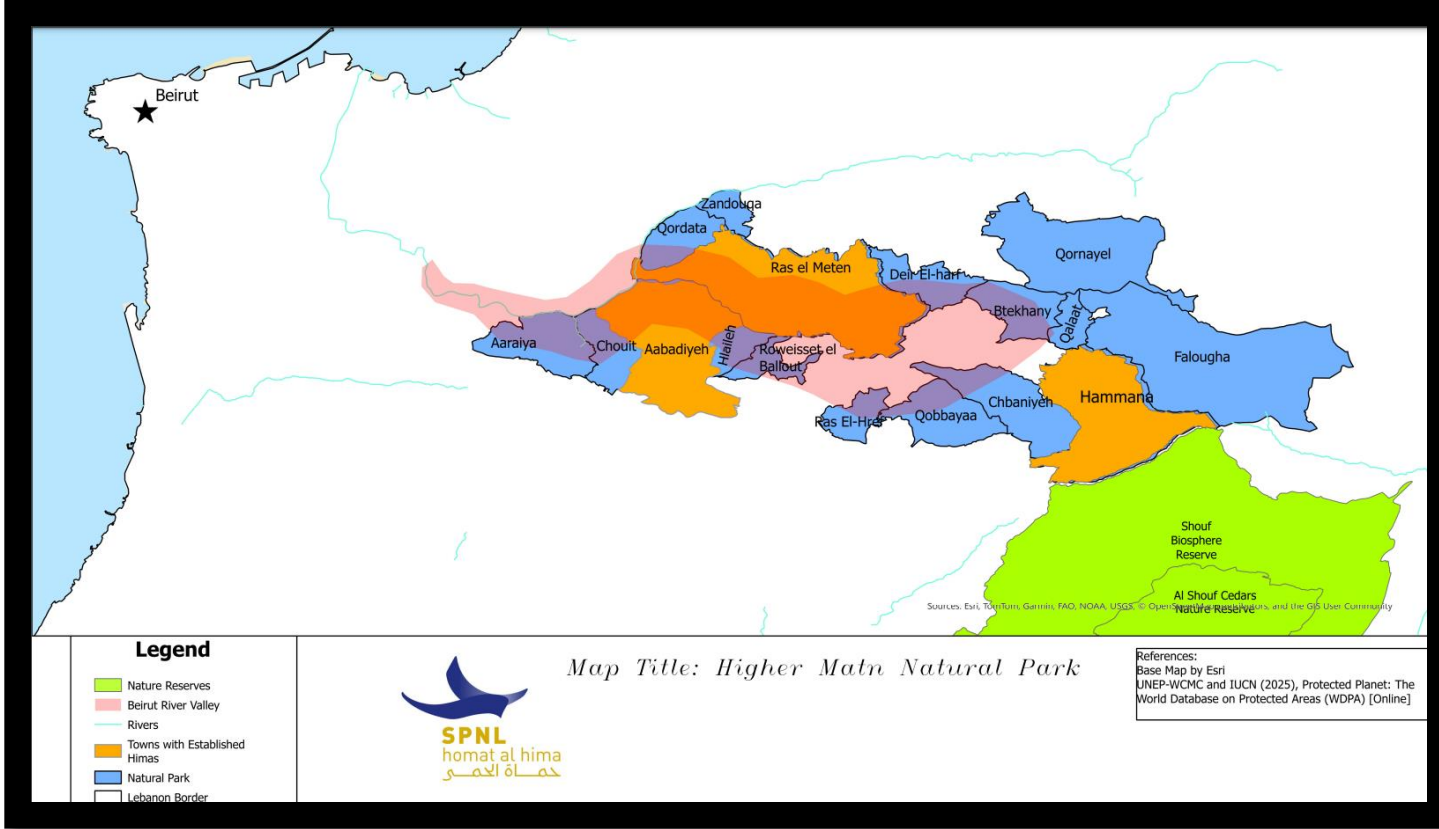
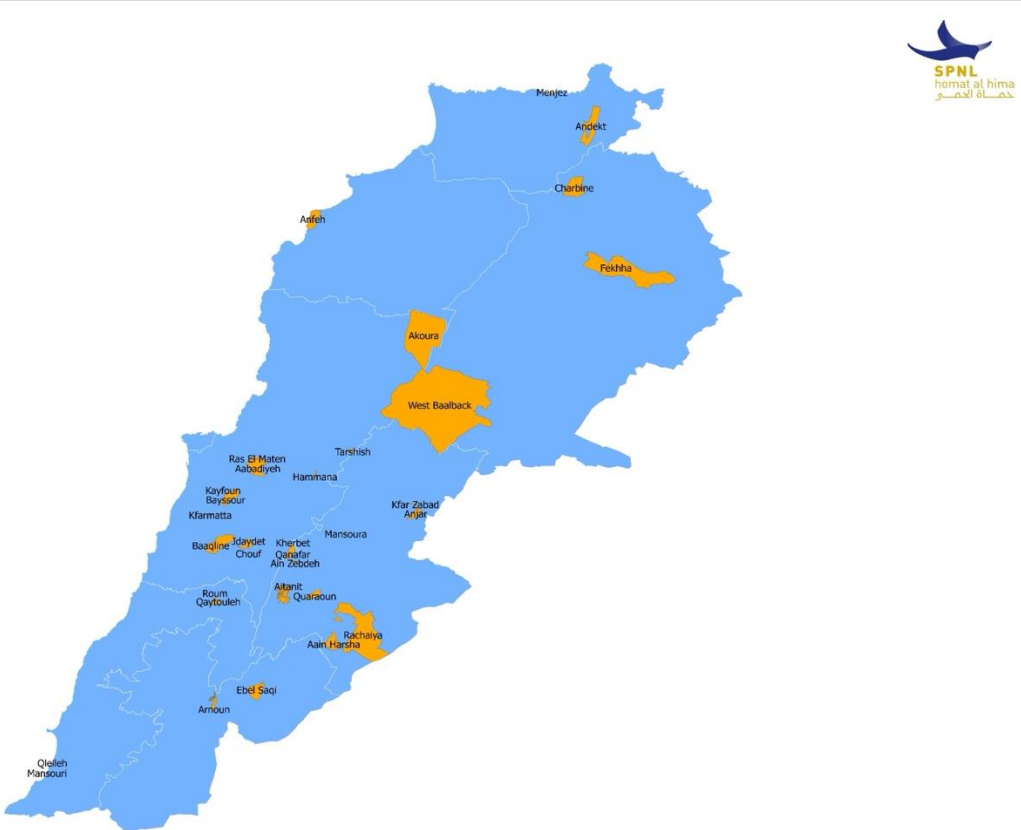
Name Here

Signed Charter

1. Ras el Matn
2. Abadieh
3. Hlalieh
4. Kalaa
5. Qobieh
6. Ras el Harf
7. Btekhney
8. Deir el Harf
9. Qortada
10. Zandouka
11. Araya
12. Hammana
13. Qarnayel
14. Falougha
15. Roweiset El Ballout
16. Shweet
17. Shbanieh



Higher Matn Natural Park



Contributing 6% of Lebanese territory to GBF

Advocating for Rawche Rock as Natural Monument

- Claiming areas from Rawche Rock to the Monk Seal cave as 4th marine Hima.
- Meeting with Beirut Municipality.
- Full support from:
 - Ministry of Environment.
 - Mohafez of Beirut.



Your Logo or Name Here

Over 42 years advocating for the 4 categories of P.A.s in Lebanon, together for Biodiversity and Nature

Partnership



- To protect these amazing beneficial sites.





Thank you



Funded by the
European Union